



QUILCHENA COMMUNITY CENTRE DESIGN BOOKLET

Quilchena, BC
MGA | LTA

PROJECT STATISTICS

ESTIMATED PROJECT COST	\$31,354,081
BUILDING SITE	LOT 8-1 IR 1 - NICOLA LAKE
BUILDING AREA	23,400 SF (2,175 SM)
BUILDING HEIGHT	1 STOREY
ADMINISTRATION	14' (12' U/S CEILING)
COMMUNITY	18' (16' U/S CEILING)
GATHERING SPACE	26' (24' U/S CEILING)
PARKING	
MAIN LOT	
ACCESSIBLE STALL	2
TYPICAL STALL	32
PASSENGER DROP OFF	7
LOADING	1
OVER FLOW	
TYPICAL STALL	34
BUS PARKING	2



Q&A

HOW WILL THE BUILDING BE PROTECTED FROM FLOODING?

A Flood Construction Level (FCL) Map was prepared by McElhanney on the request of Upper Nicola in November 2021. The Quilchena Community Centre will be raised to meet the recommended FCL of 628.5m so that the entire building will be above the 200-year flood plain.

The septic system is currently outside the 20-year flood plain, the design team is revisiting the design to ensure that it will not be susceptible to water infiltration in the event of flooding.

Additional consideration has been given by the design team to how storm water is managed on-site. Rain gardens and bio swales will be used to manage run-off from the building to surrounding properties.

HOW WILL THE BUILDING BE PROTECTED FROM WILDFIRES?

The building will be designed to be FireSmart BC guidelines, measures include;

- 5' non-combustible gravel strip along the perimeter of the building.
- Non-combustible roofing material.
- Combustible cladding is limited to protected portions of the building.
- Adherence to FireSmart Priority Zones with landscaping and planting selection.

For more information visit firesmartbc.ca

HOW WILL THE PROJECT INCORPORATE SYLIX CULTURE?

The vision of the Quilchena Community Centre is to be a gathering place that upholds, celebrates and shares Upper Nicola's Sylix culture and heritage. Many of the spaces are designed with the intention to support cultural practices such as; fish and gaming preparation, weaving, beading, traditional medicines, and storytelling.

Together with Upper Nicola the design team is also looking at a range of opportunities to engage with local artists, craftspeople and community members to contribute to the following aspects of the design;

- Community built Pithouse + Tulle Lodge
- Nsyilxcen signage and wayfinding throughout the building and landscape
- Artist opportunity to incorporate 13-moon calendar and four food chiefs within main gathering space
- Water feature in building entry and gathering space
- Community led murals in Youth and Fitness rooms
- Artifact display case and community boards surrounding the gathering space
- Incorporation of local materials

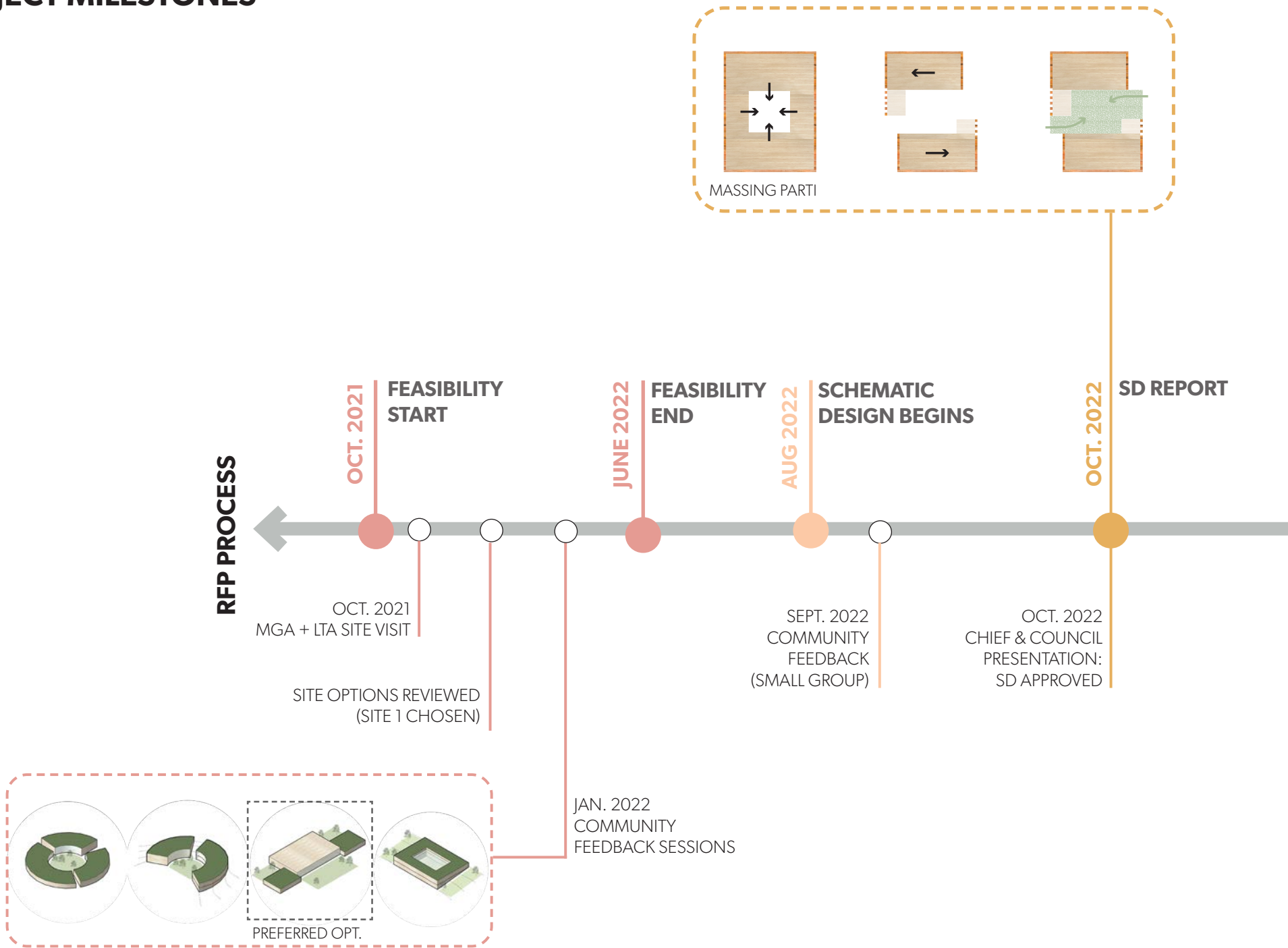
HOW CAN I GET INVOLVED IN THE PROJECT?

There are many ways for community members to be involved in the Quilchena Community Centre, some opportunities include;

- Skills training opportunities and working with local trades during construction
- Operations and maintenance to ensure the longevity of the building
- Local artist opportunities to work with design team to incorporate Sylix culture

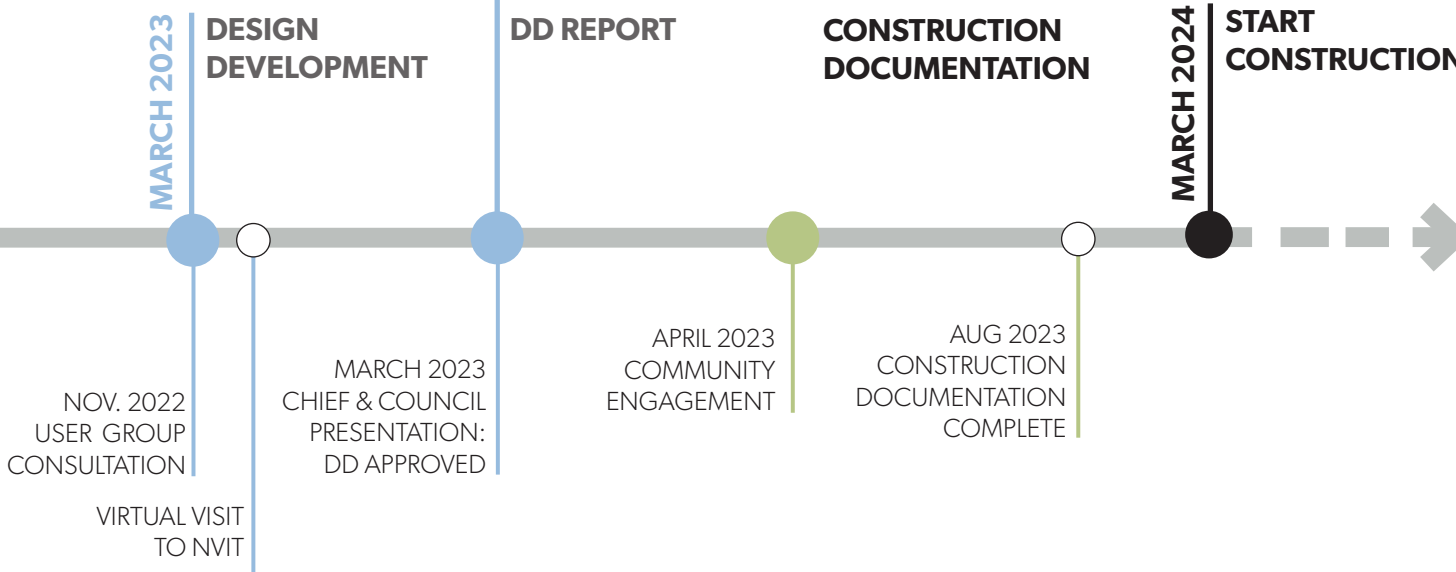
If you are interested or have any further questions please reach out to **Eva Tom** at etom@uppernicola.com and **250.280.4406**

PROJECT MILESTONES





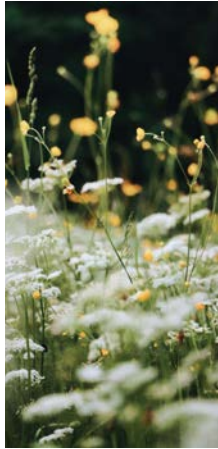
FRONT ENTRY VIEW



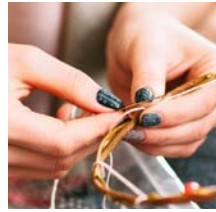
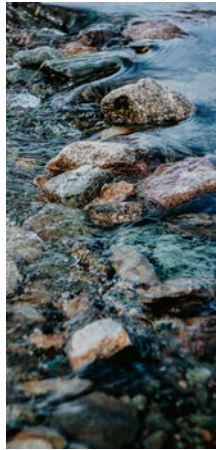


THE **QUILCHENA COMMUNITY CENTRE** WILL
BE A GATHERING PLACE NESTLED INTO THE LANDSCAPE,
UPHOLDING, EMBODYING AND SHARING UPPER NICOLA
CULTURE AND HERITAGE.

SEASONS
13-MOON CALENDAR
BERRY PICKING
FISHING
HUNTING



LAND
WATER
NATURE
TOPOGRAPHY
HISTORY



ART +
CRAFT
BASKET WEAVING
PIT HOUSE
TULE MATS
ARTIFACT STORAGE +
DISPLAY



QUILCHENA COMMUNITY CENTRE

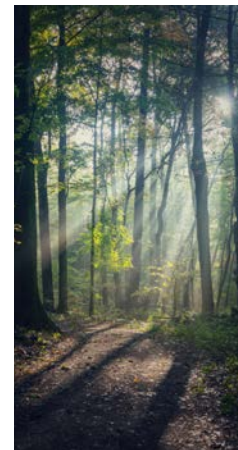
COOKING
HARVESTING
HEALTHY MEALS
CLEANING AND
PREPARING OF MEAT
AND FISH



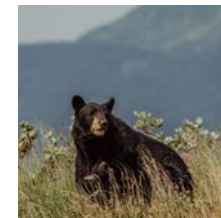
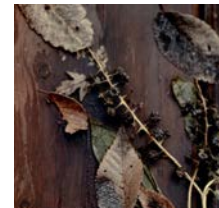
PEOPLE
WELCOMING
TRADITIONS
INCLUSIVE
SAFE
INWARD LOOKING



SUSTAIN-
ABILITY
SOLAR PV PANELS
RAIN GARDEN/
BIOSWALES



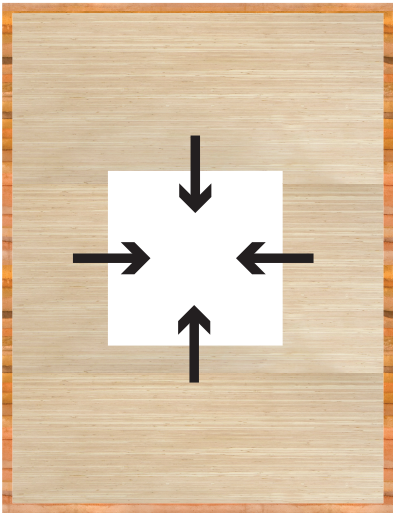
HEALING
MEDICINE TEACHING
WELLNESS



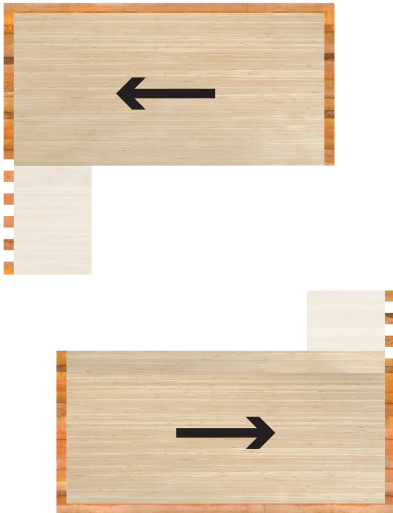
GOVER-
NANCE
SELF-DETERMINATION
FOUR FOOD CHIEFS



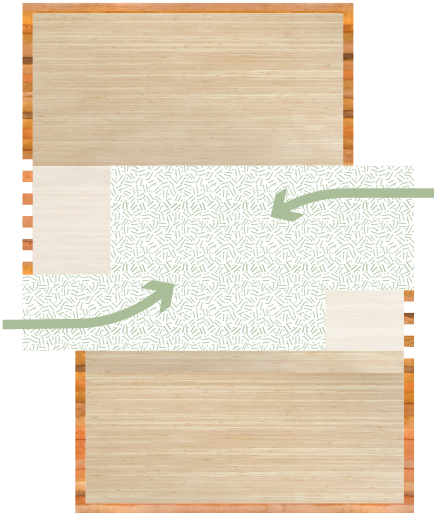
BUILDING CONCEPT



INWARD LOOKING



SHIFTED BARS



BRING LANDSCAPE IN

PROJECT DRIVERS



CONSTRUCTIBILITY + NATURAL MATERIALS

- Cost Effective Structural Systems
- Simple Detailing + Connections
- Skills Training Opportunities



FUTURE GROWTH + ADAPTABILITY

- Future Expansion Of Administration
- Climate Resiliency



BUILDING EFFICIENCY + SUSTAINABILITY

- Renewable Energy Sources
- High-Efficiency Building Systems
- Passive Heating + Cooling
- Sustainable Site Design



BUILDING AS A TOOL FOR TEACHING

- Uphold Upper Nicola Culture And Heritage
- Encourage Knowledge Exchange + Pass Down Tradition

SITE CONTEXT



SITE PLAN



COMMUNITY GARDEN



PLAYGROUND



FIRE / BBQ

BUILDING AXONOMETRIC



1. NATIVE PLANTING



5. GREENHOUSE + TOOL LIBRARY



2. COMMUNITY GARDEN



6. COMMUNITY BUILT PIT HOUSE



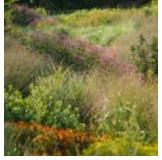
3. FIRE + BBQ PIT



7. HORSE HITCHES



4. PLAYGROUND



8. RAIN GARDEN/ BIOSWALE

PARKING:

MAIN LOT
ACCESSIBLE STALL : 2
PARALLEL STALL: 7
TYPICAL STALL: 32

OVERFLOW
BUS STALL: 2
TYPICAL STALL: 34

TOTAL STALLS: 77



BUILDING PLAN



MAIN ENTRY



OUTDOOR GATHERING SPACE



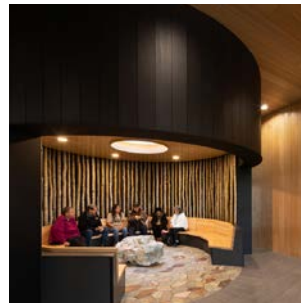
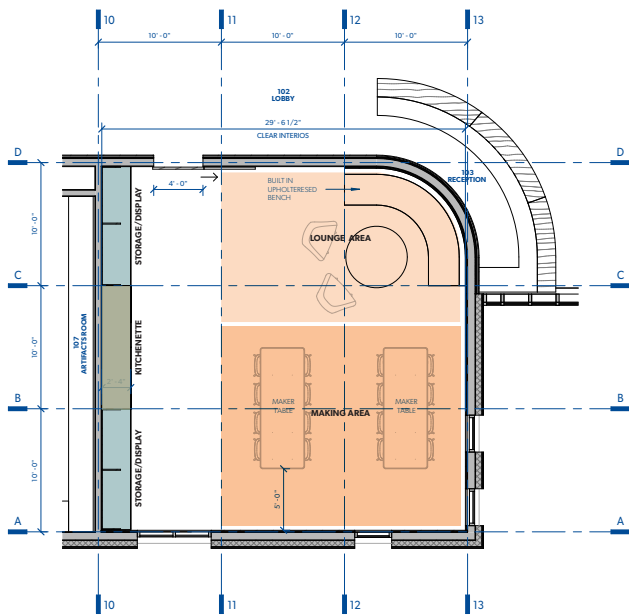
GATHERING SPACE



ELDERS KNOWLEDGE EXCHANGE

USE + FUNCTION:

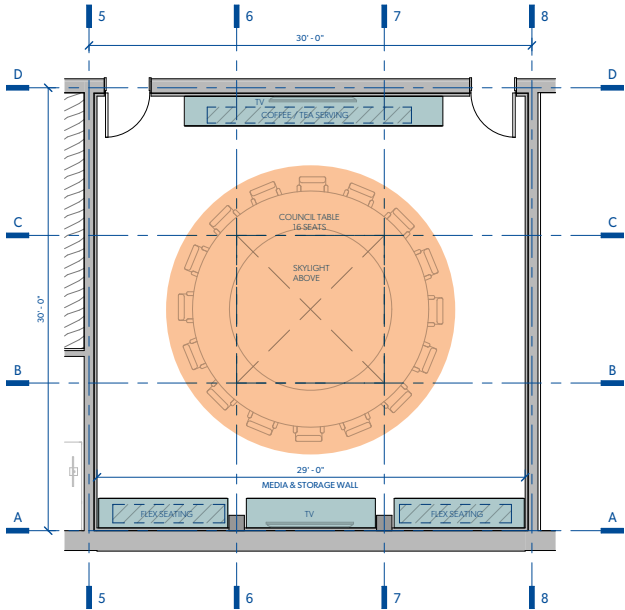
- LOUNGE AREA FOR STORYTELLING
- SOCIAL SPACE FOR ELDERS AND YOUTH TO GATHER IN SMALL GROUPS.
- MAKER'S AREA FOR SEWING, WEAVING, BEADING, ETC
- STORAGE/DISPLAY OF TRADITIONAL MEDICINES
- SAFE, INCLUSIVE SPACE THAT WELCOMES YOU TO THE BUILDING



CHIEF + COUNCIL CHAMBERS

USE + FUNCTION:

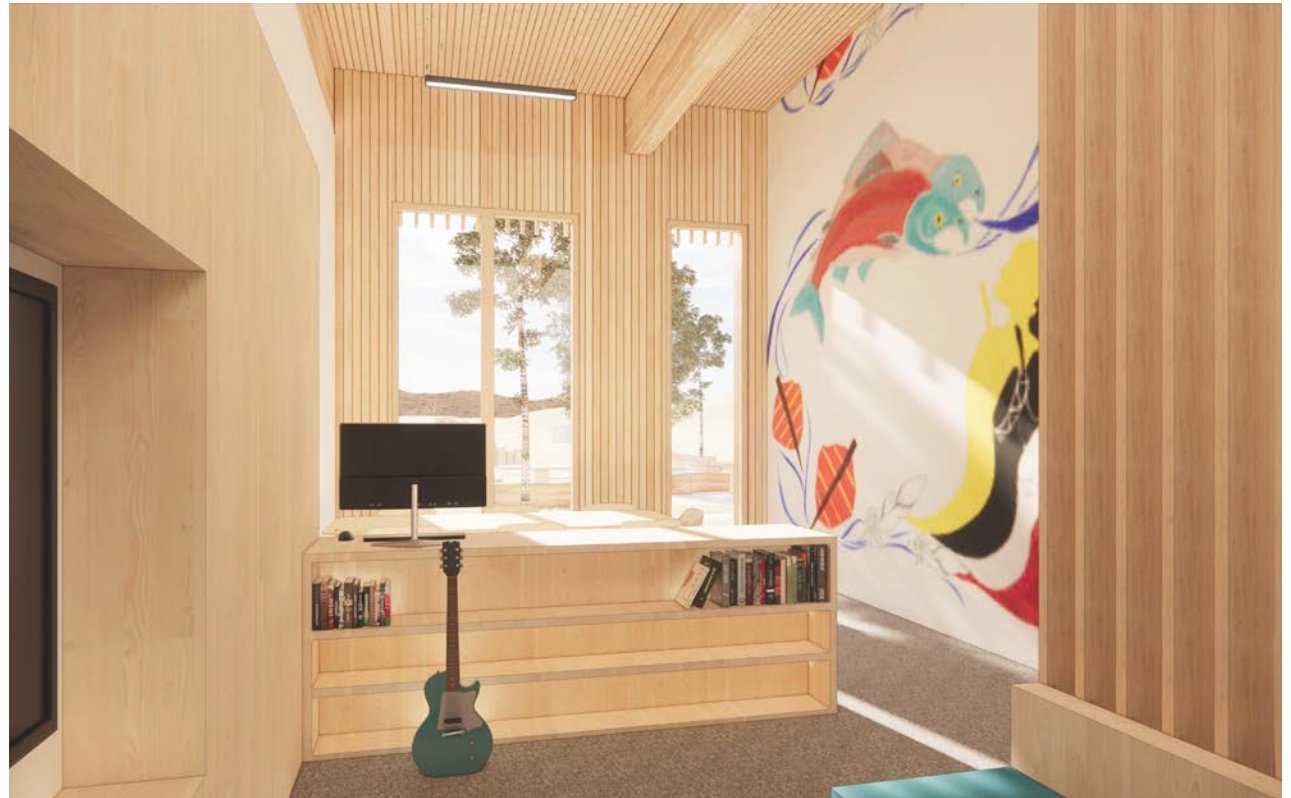
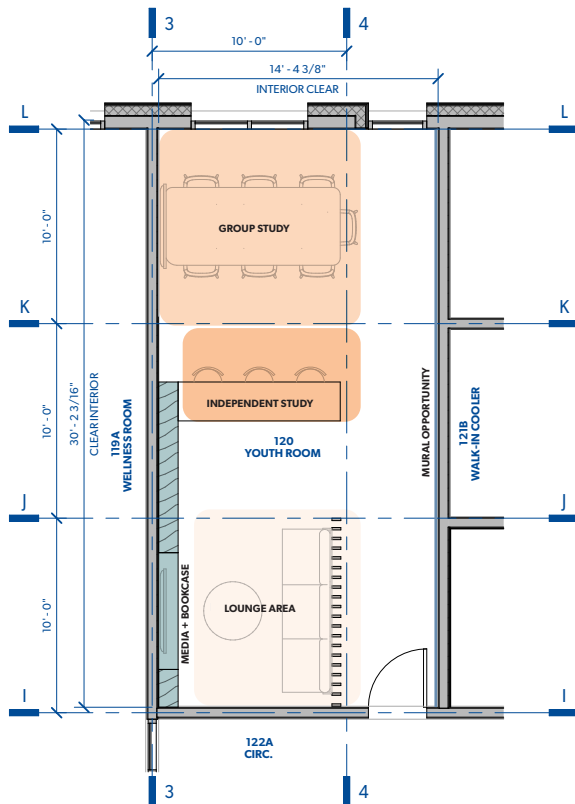
- COUNCIL MEETINGS
- BAND ADMINISTRATION MEETINGS
- COMMUNITY MEETINGS, WORKSHOPS + CLASSES



YOUTH ROOM

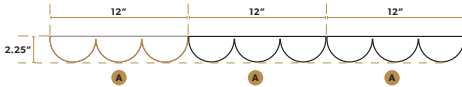
USE + FUNCTION:

- HOMEWORK CLUB AND INDEPENDENT STUDY
- HANGOUT SPACE
- READING NOOK

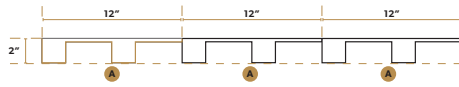


FACADE PROFILE

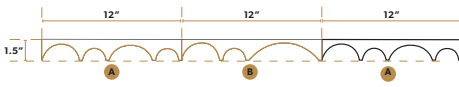
PROFILE 01



PROFILE 02



PROFILE 03



PROFILE 04

